

SONG CHOICE #1

Bikini Bottom Day 2 (Part 1)

CUE:

Take cue from Director or Stage Manager.

(SPONGEBOB rises and readies for the day.)

SPONGEBOB: Ahh... Good morning, world,
and all who inhabit it!

START

Bouncy Happy Pop

4

5

SPONGEBOB:

Jump out of bed,

mix up a break-fast for my fav - 'rite pet snail.

(SPONGEBOB's pet snail,
GARY, appears and utters
his characteristic sound:)
GARY: Meow.

Full steam a - head, the

S. S. "I am read-y" is a - bout to set sail.

This kind of day could-n't get much bet-ter but it

15
8
keeps on try - ing. I'm on my way,

(His spatula appears, and he flips an imaginary Krabby Patty.)

18
8
some-where there's a Krab-by Pat-ty that needs fry - ing.

20
8
21
And who's the luck-y sponge in the mir-ror who is

22
8
liv-ing his dream? Who's al-ways ex-tra care-ful with his

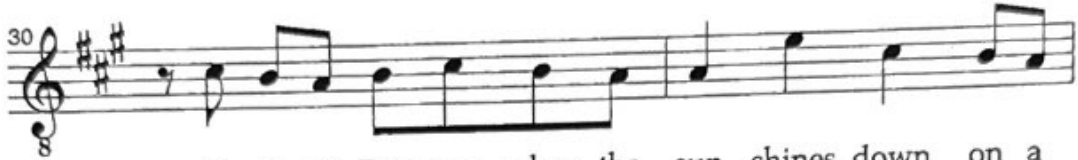
(Grabs his toothbrush.)

24
8
dent-al hy - giene? Ga - ry it's me!

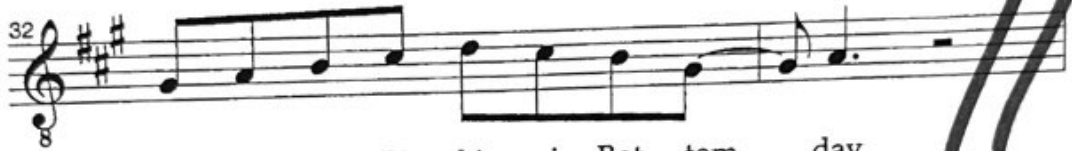
26
8
27
Hap-py just to be here in the world - re - nowned



Bi - ki - ni Bot - tom! How I love this town,



Bi - ki - ni Bot - tom, when the sun shines down on a



beau - ti - ful Bi - ki - ni Bot - tom ___ day.

(GARY exits. SPONGEBOB opens the door of his pineapple and steps outside. Over view widens to include Patrick's rock. It flips over to reveal PATRICK, who lets out a giant yawn.)

SPONGEBOB: Good morning, Patrick!

PATRICK: It's morning already?

SPONGEBOB: Yep, and I'm singing an opening number!

PATRICK: Ooh ooh I want a verse!



I missed a snack— this bus - y sched - ule makes it



hard to be me. To stay on track.